

705 NW 4TH

LEASE SUMMARY



LEASE SUMMARY

Available SF: 16,000 - 2,000 SF

Lease Rate: \$16.50 SF/YR

Lease Type: NNN

Year Built: 1933

Building Size: 16,000 SF

PROPERTY HIGHLIGHTS

- Located at the northwest corner of 4th and Lee
- 30 free parking spaces
- 3 block walk to the new street car route
- Space will be delivered in white-box condition
- Easily accessible for employees and visitors
- Unobstructed views of Oklahoma City skyline
- Large flexible floor plates to accommodate a variety of space plans

For more information please contact:

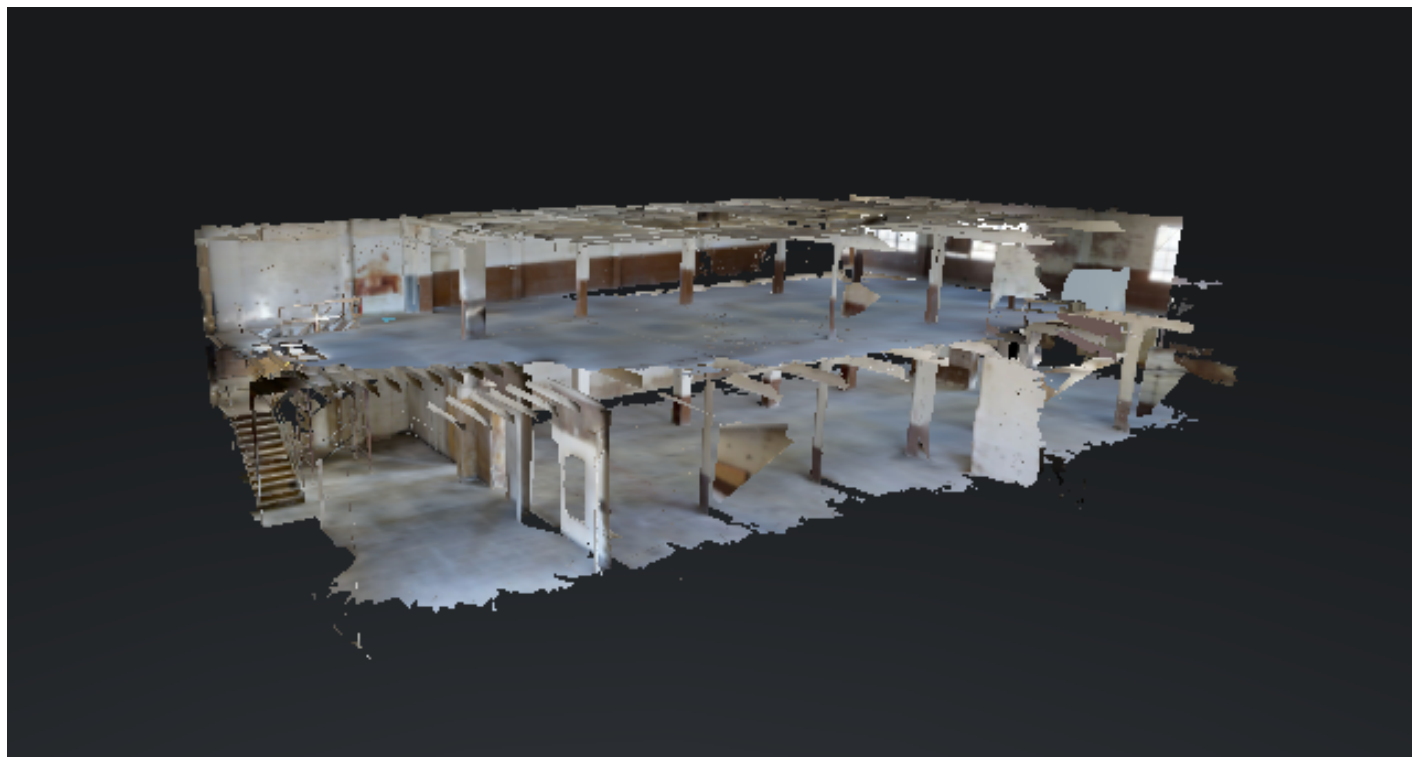
TRE DUPUY

tdupuy@priceedwards.com

405.843.7474

705 NW 4TH

3D WALKTHROUGH



Click Link For 3D Tour Of Space: [3D Walkthrough](#)

For more information please contact:

TRE DUPUY

tdupuy@priceedwards.com

405.843.7474

705 NW 4TH

LOCATION MAPS



For more information please contact:

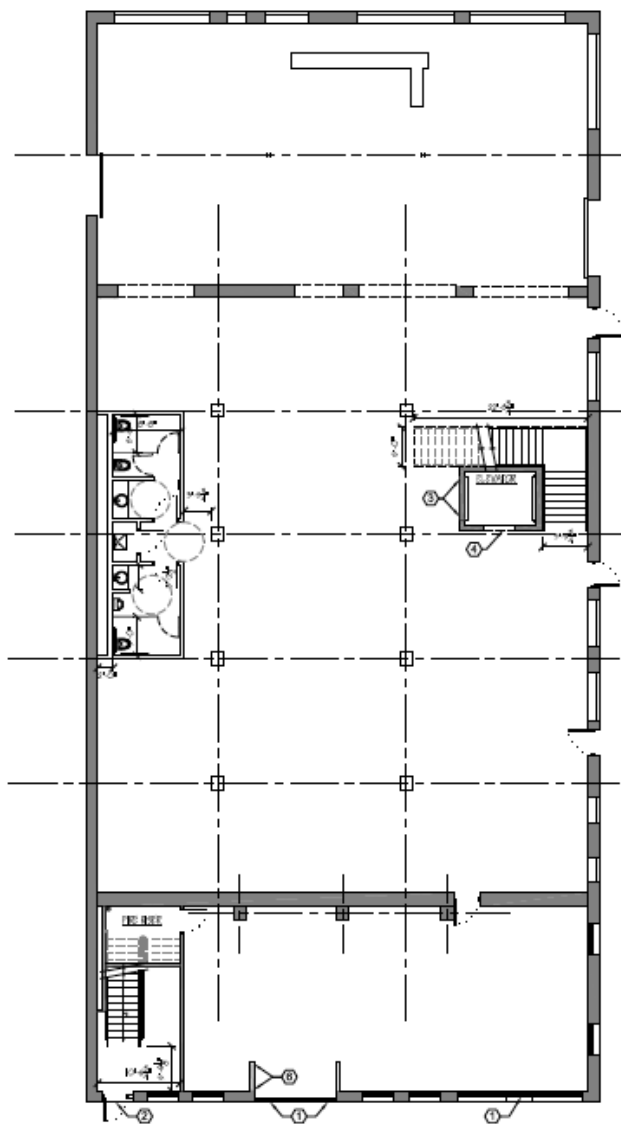
TRE DUPUY

tdupuy@priceedwards.com

405.843.7474

705 NW 4TH

FLOOR PLANS: 1ST FLOOR



1 FIRST FLOOR PLAN
ASB/1/14/14

For more information please contact:

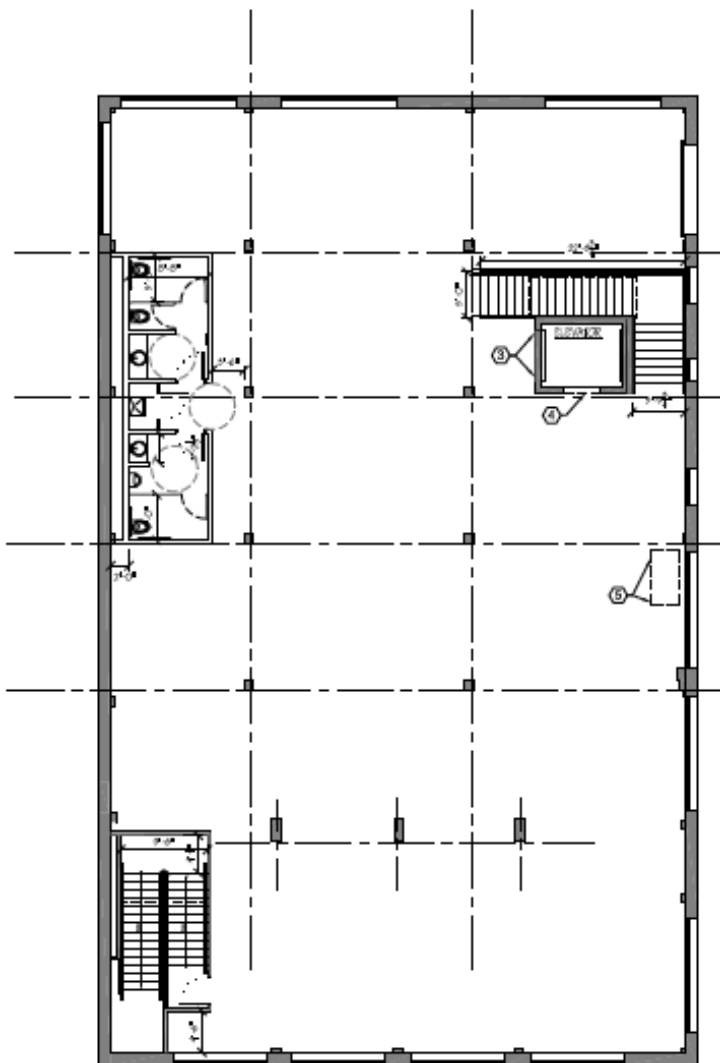
TRE DUPUY

tdupuy@pricedwards.com

405.843.7474

705 NW 4TH

FLOOR PLANS: 2ND FLOOR



2 SECOND FLOOR PLAN
SCALE: 1/8" = 1'-0"

For more information please contact:

TRE DUPUY
tdupuy@pricedwards.com
405.843.7474